



STOP



LOOK



PROCEED

SAFETY AWARENESS PROGRAMME



STOP



LOOK



PROCEED

SUKRITI SOCIAL FOUNDATION

NEW NO 183/10(146/10),

BREEZE APARTMENTS,

POONAMALLEE HIGH ROAD

KILPAUK, CHENNAI-600010

PH: 28273267 MOBILE:9444798474

WWW.SUKRITISOCIALFOUNDATION.ORG



WHO IS A SAFE AND GOOD DRIVER

A PERSON WHO HAS

Knowledge of traffic rules and driving practices that help traffic move safely.

Skill to care about the safety of others on the road. We all are responsible for avoiding accidents.

Attitude to co-operate with other drivers to keep traffic moving safely. He must be courteous, giving other drivers space to change lanes, not cutting them off and signalling before turning.



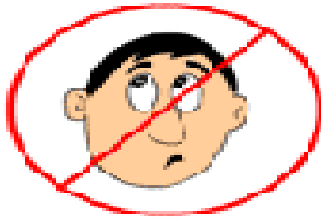
GETTING READY TO DRIVE

**CHECK YOUR PHYSICAL AND MENTAL
CONDITION**

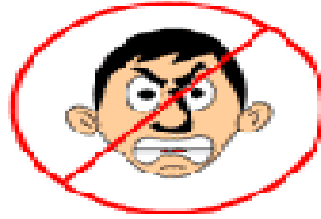
**INSPECT YOUR VEHICLE AND CHECK THE
DRIVING CONDITION**

**WHILE DRIVING CARRY
YOUR DRIVING LICENCE
REGISTRATION CERTIFICATE
INSURANCE CERTIFICATE**

DO NOT DRIVE IF YOU ARE



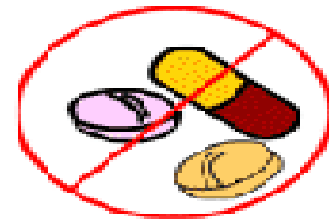
**SICK AND
TIRED**



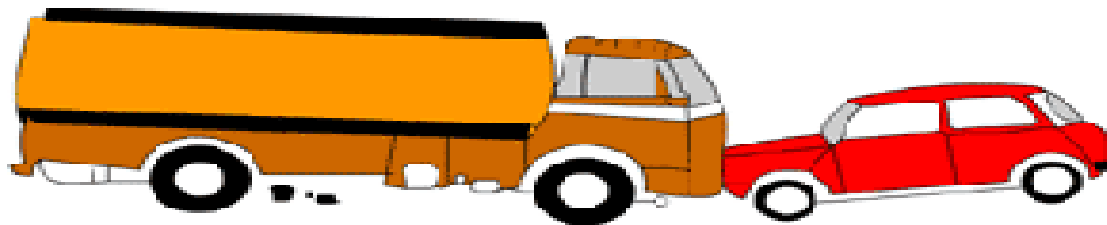
ANGRY



DRUNK



**TAKING
DRUGS THAT
CAUSE
DROWSINESS**



**YOU COULD BE RISKING YOUR LIFE
AND THAT OF OTHERS**



USE INDICATORS AND SIGNALS

BEFORE TURNING
CHANGING LANES
COMING OUT OF PARKING AREA

GIVE CORRECT INDICATIONS WELL BEFORE
YOU MANOUVRE AND ENSURE THAT
OTHERS CAN SEE IT



DRIVING THROUGH INTERSECTIONS AND CROSSINGS

THERE ARE TWO TYPES OF INTERSECTIONS
CONTROLLED
UNCONTROLLED

IN CONTROLLED INTERSECTIONS

IF THE LIGHT IS GREEN DRIVE THROUGH THE INTERSECTION AT A STEADY SPEED

IF THE LIGHT IS AMBER DRIVE THROUGH WITH CAUTION

IF THE LIGHT IS RED BRING YOUR VEHICLE TO COMPLETE HALT

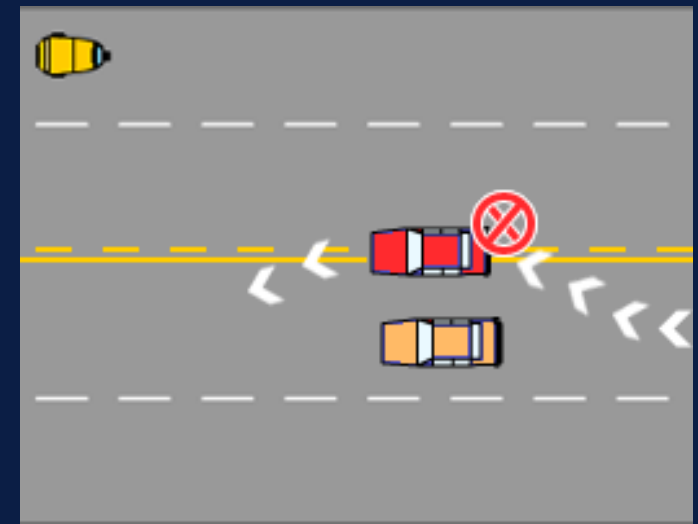
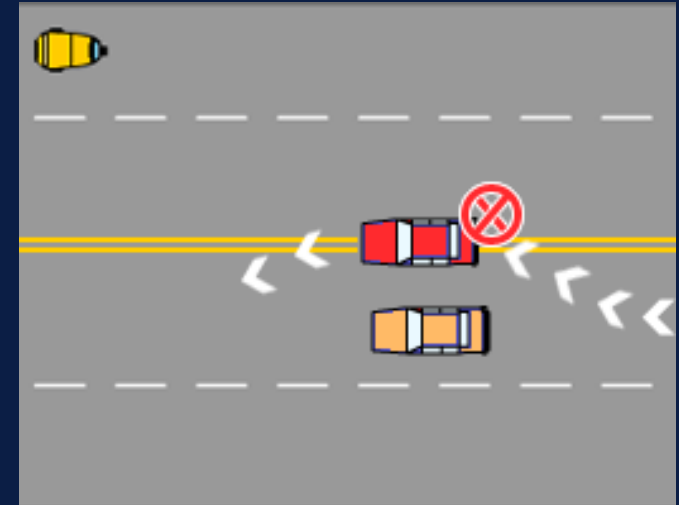
IF YOU ARE A FEW METERS AWAY FROM THE SIGNAL AND THE SIGNAL IS GREEN , DON'T BE IN A HURRY TO CROSS THE INTERSECTION BEFORE THE SIGNAL TURNS RED. SLOW DOWN, WAIT FOR THE SIGNAL TO TURN RED, AMBER AND GREEN AND THEN PROCEED.

WHEN YOU DRIVE THROUGH UNCONTROLLED INTERSECTIONS PROCEED WITH CAUTION



DIVIDING LINES

Dividing lines may be
WHITE OR YELLOW LINES
BROKEN OR CONTINUOUS
KEEP TO THE LEFT THESE
LINES-CAN CROSS TO
OVERTAKE OR TURN





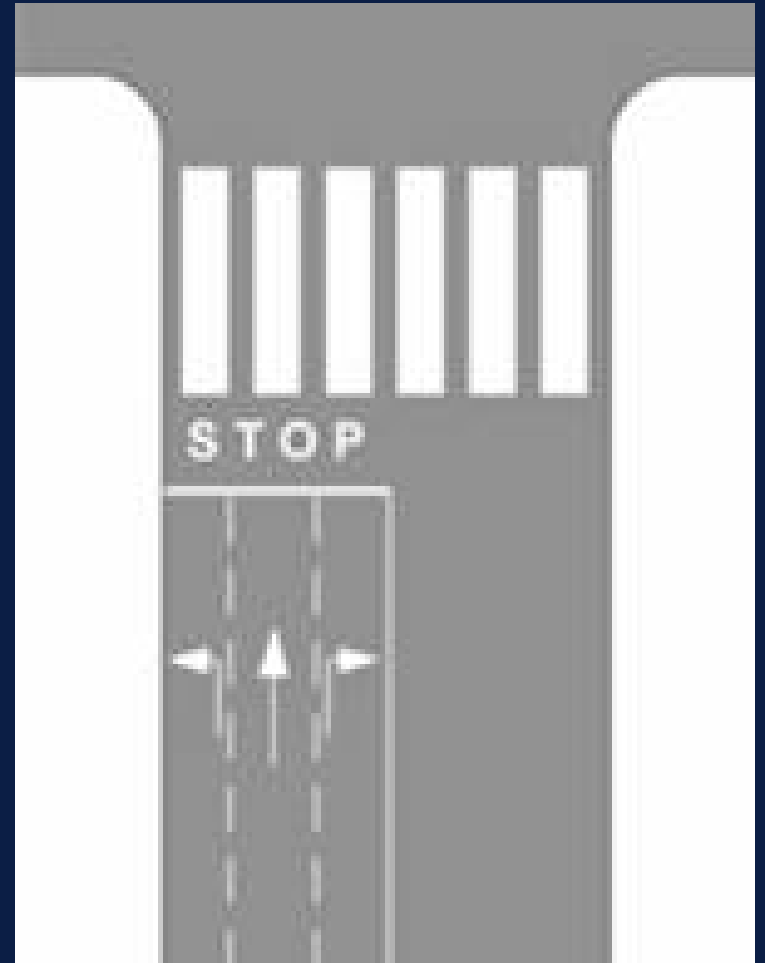
TRAFFIC SIGNS

THERE ARE 3
TYPES OF TRAFFIC
SIGNS

MANDATORY
/REGULATORY
SIGNS

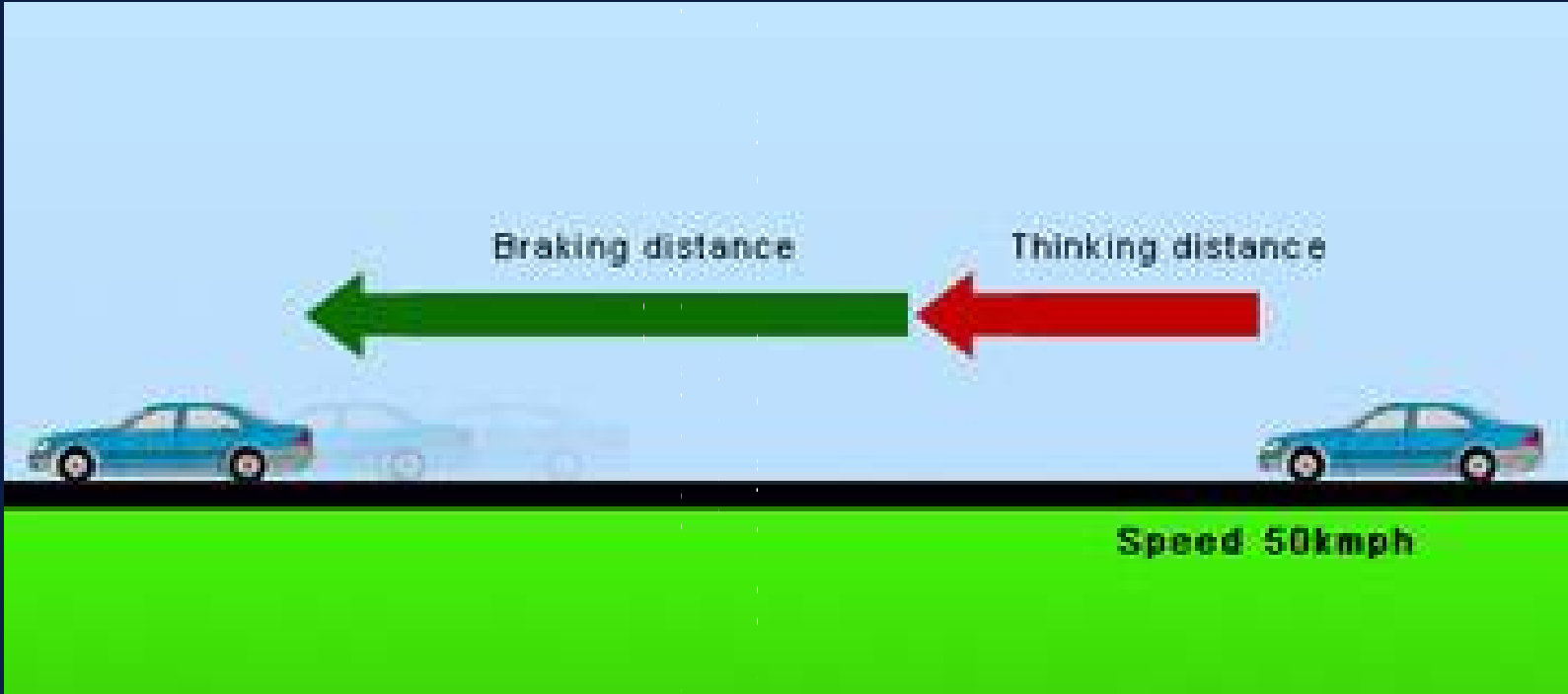
CAUTIONARY
SIGNS

INFORMATION
SIGNS





SAFE DISTANCE

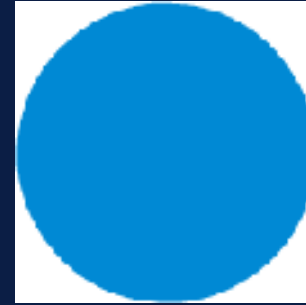




RED AND BLUE SIGNS



RED SIGN INDICATES WHAT
SHOULD NOT BE DONE



BLUE SIGN INDICATES
WHAT SHOULD BE DONE



RED TRIANGLE
CAUTIONS



BLUE RECTANGLE
INFORMS



PROHIBITORY SIGNS



NO PARKING AND NO STOPPING





NOT ALLOWED





DIRECTION CONTROL SIGNS



FACILITY INFORMATION SIGNS





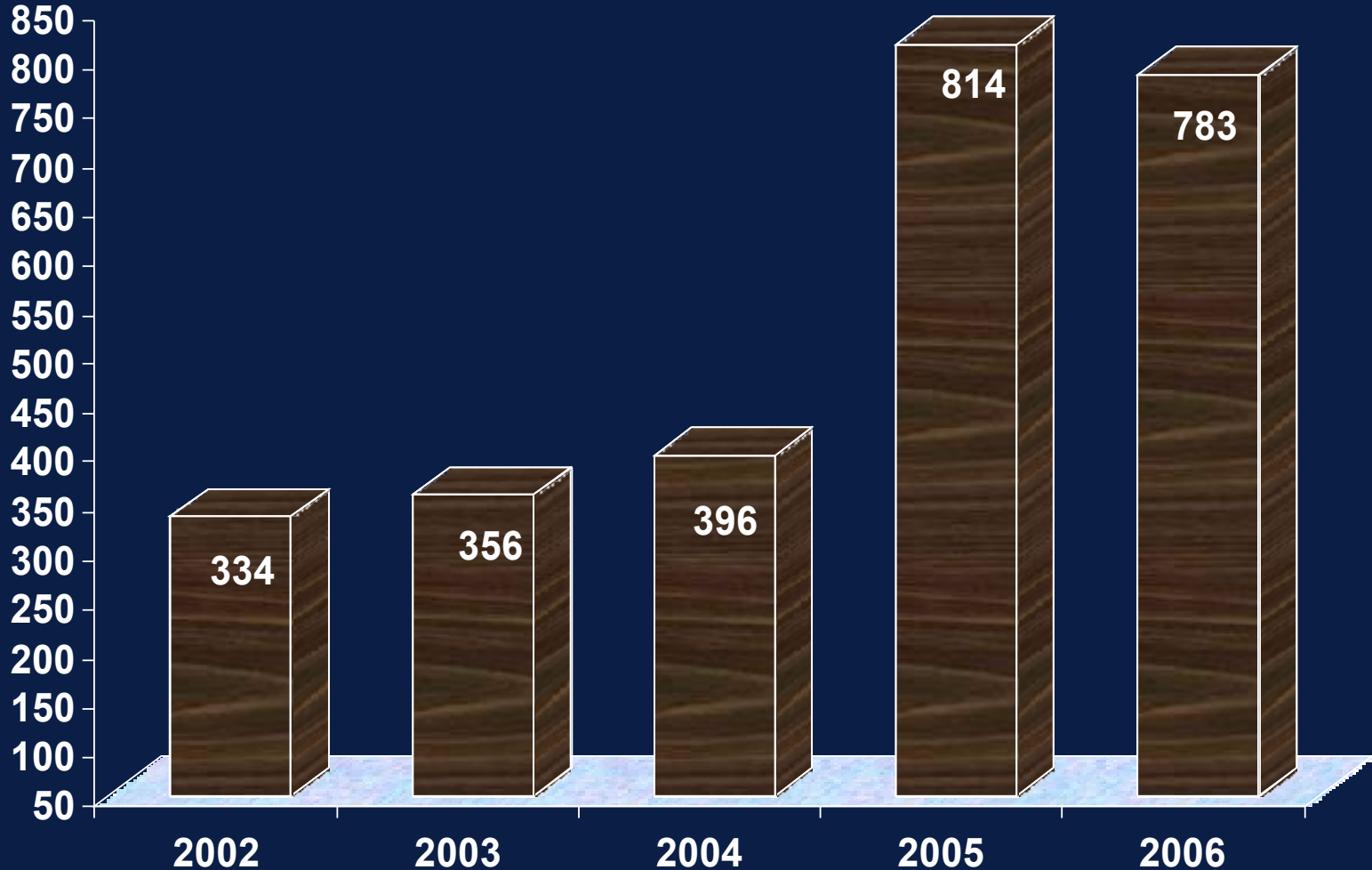
PARKING SIGNS





NOS OF PERSONS KILLED IN ROAD ACCIDENTS FROM 2002-AUG 2006

2002 2003 2004 2005 2006





NOS OF PERSONS INJURED IN ROAD ACCIDENTS UPTO THE MONTH OF AUG FROM 2002-2006

YEAR	2002	2003	2004	2005	2006
NOS OF PERSONS	2351	2722	3247	4932	4449



Age Wise Victims Involved In Road Accidents From 2002-AUG 2006

Age Group	Upto the Month of AUGUST									
	2002		2003		2004		2005		2006	
	M	F	M	F	M	F	M	F	M	F
Below 14 Years	16	4	16	5	10	3	20	7	17	8
15 to 29 Years	78	7	85	7	112	5	199	14	197	19
30 to 44 Years	88	12	94	12	85	7	227	18	188	22
45 to 59 Years	70	13	76	9	85	16	170	33	167	32
60 Years and above	33	13	39	13	54	19	98	28	110	23
Total:	285	49	310	46	346	50	714	100	679	104

TYPES OF VICTIMS INVOLVED IN FATAL ACCIDENTS FROM 2002-UPTO AUG 2006

Type of Victims	Upto the Month of AUGUST				
	2002	2003	2004	2005	2006
Pedestrian	86	120	134	261	281
Motor Cycle rider & P.rider	120	117	156	319	293
Cyclists	52	52	53	94	86
Auto Driver & Occupants	12	16	6	31	29
Fell Down Passengers	25	17	18	27	16
Car Driver & Occupants	4	5	-	12	13
Sleeping/Sitting/Standing	12	16	18	40	33
Try-Cyclists	6	6	2	7	8
Van Driver & Occupants	-	2	2	10	9
Others	8	3	2	5	9
Total	334	356	396	814	783



VEHICLES RESPONSIBLE FOR FATAL ACCIDENTS FROM 2002 UPTO AUG 2006

Faulty Vehicle	Upto the Month of AUGUST				
	2002	2003	2004	2005	2006
Two Wheeler	58	79	98	197	161
Car	30	23	35	69	80
Auto Rickshaw	10	29	26	46	58
Bus (Corp.)	51	51	42	83	86
Bus (Private)	7	8	4	12	26
Lorry	79	75	62	205	200
Water Tanker	10	14	47	13	21
Van	29	32	47	99	68
Unknown Vehicle	29	22	17	44	58
Others	19	10	8	19	12



TYPE OF VICTIMS INVOLVED IN NON FATAL ACCIDENTS FROM 2002-AUG 2006

Type of Victims	Upto the Month of AUGUST				
	2002	2003	2004	2005	2006
Pedestrian	620	760	857	1372	1269
Motor Cycle rider & pillion rider	935	1038	1264	1860	1802
Cyclists	283	308	362	464	368
Auto Driver & Occupants	210	293	358	461	400
Fell Down Passengers	49	59	27	76	81
Car Driver & Occupants	71	57	116	186	159
Sleeping/Sitting/Standing	81	97	109	218	161
Try-Cyclists	19	23	17	47	6
Van Driver & Occupants	30	53	59	102	82
Others	27	14	45	68	75
TOTAL	2351	2722	3247	4932	4449



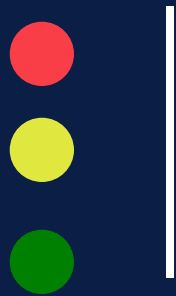
TIME WISE-FATAL ACCIDENTS FROM 2002-2006

Time	Upto the Month of August				
	2002	2003	2004	2005	2006
05.00 to 08.00 Hrs	32	33	42	78	88
08.00 to 11.00 Hrs	44	61	55	126	107
11.00 to 14.00 Hrs	41	46	47	105	101
14.00 to 17.00 Hrs	52	48	44	115	106
17.00 to 20.00 Hrs	63	60	45	128	119
20.00 to 23.00 Hrs	50	59	85	153	169
23.00 to 05.00 Hrs	52	49	78	109	93
Total :	334	356	396	814	783

ROAD WISE FATAL ACCIDENTS FROM AUG 2002-2006



Name of the Road	Upto the Month of August				
	2002	2003	2004	2005	2006
100 Feet Road	35	31	35	45	34
Anna Salai	25	32	34	26	25
EVR Salai	19	18	15	13	23
200 Feet Bypass Road	-	-	-	25	18
200 Feet Road	7	11	11	8	15
Poonamallee High Road	-	5	2	52	71
Mount PH Road	-	-	-	17	11
ECR Road	-	-	2	33	34
Old Mahabalipuram Road	2	3	1	31	28
GNT Road	4	-	1	20	21
GST Road	-	-	-	85	61
Erukanchery High Road	4	4	4	2	6
Kamarajar Salai	13	13	18	3	7
Rajaji Salai	10	8	10	3	3
Medayakkam Main Road				14	8



DISABLED ROAD USERS

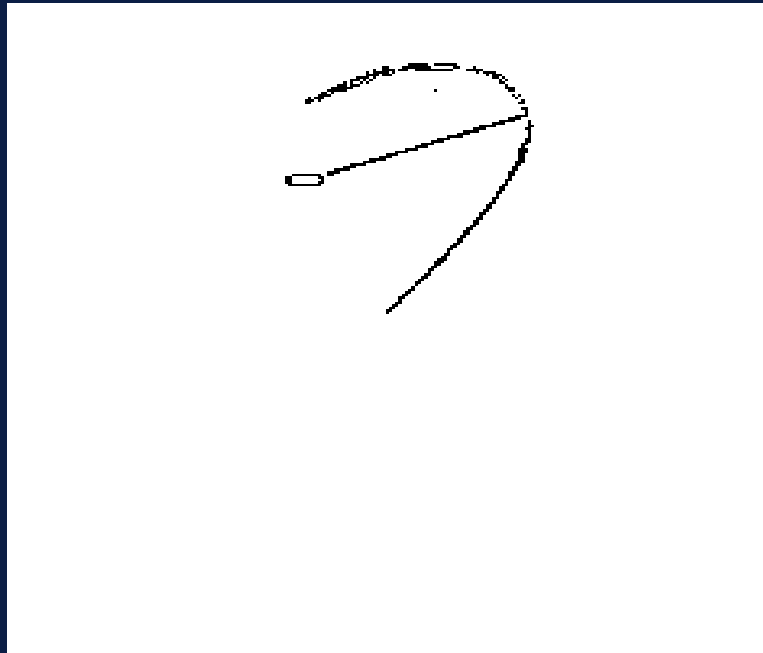
DISABLED VEHICLES ARE CUSTOM
MADE AND THEY ARE NOT WELL
BALANCED

A DISABLED VEHICLE TAKES A LONGER
TIME TO STOP

GIVE RIGHT OF WAY TO DISABLED
VEHICLES



AHIMSA ALL THE WAY





WE THANK

MR. HARMAN. S. SIDHU

FOUNDER, ARRIVE SAFE SOCIETY, CHANDIGARH

**CHENNAI CITY TRAFFIC
POLICE**

**MANAGEMENT OF MAR
GREGORIOUS COLLEGE**



STOP



LOOK



PROCEED

SAFETY AWARENESS PROGRAMME

Web design support – Dristi Web Solutions

<http://www.dristi.net.in/>